

Power Flame® Nova Plus 2™



The Power of Choice Power Flame's Premixed, Surface Stabilized Combustion Burner

The Power Flame NOVA Plus 2™ Combustion System employs a fully premixed, surface stabilized combustion technology to provide proven ultra-low NOx solutions – **Sub 9 to 20 PPM** – without FGR for commercial, industrial and process applications.

Premixing fuel and air assures complete combustion with minimal levels of CO and unburned hydro-carbons.

The all metallic firing head

guarantees reliable and consistent performance at the operating conditions necessary to provide single digit NOx emissions.

The NOVA Plus 2 is a simple, cost effective, field proven system designed to meet today's most stringent emissions requirements.

Power Flame provides a U.L. listed, factory tested

package, tailored to your job specific requirements. The NOVA Plus 2 is suitable for use on firetube and watertube boiler applications, as well as process heaters. It will operate with uniform heat flux and excellent flame stability over a broad range of operating conditions.

The modular concept that is the basis for all Power

Flame burners keeps the initial investment low and maintenance costs at a minimum across the life of the burner.

The NOVA Plus 2 is equipped with a state of the art control system and integral panel. The parallel positioning combustion control safely operates the burner and minimizes the start-up time.

Linkageless Controls

Total Access Panel

Swings out, easily removable top and front panels give total access to circuit board mounted operating controls

Metallic Firing Head

The metallic porous mesh provides surface-stabilized combustion for excellent flame stability at ultra-low NOx operating conditions

Washable Stainless Steel Filter Assembly

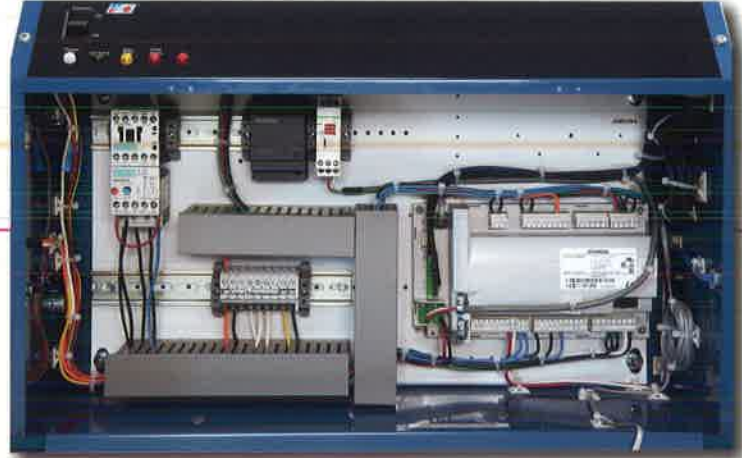


Power Flame

The Power to Manage Energy

STANDARD EQUIPMENT

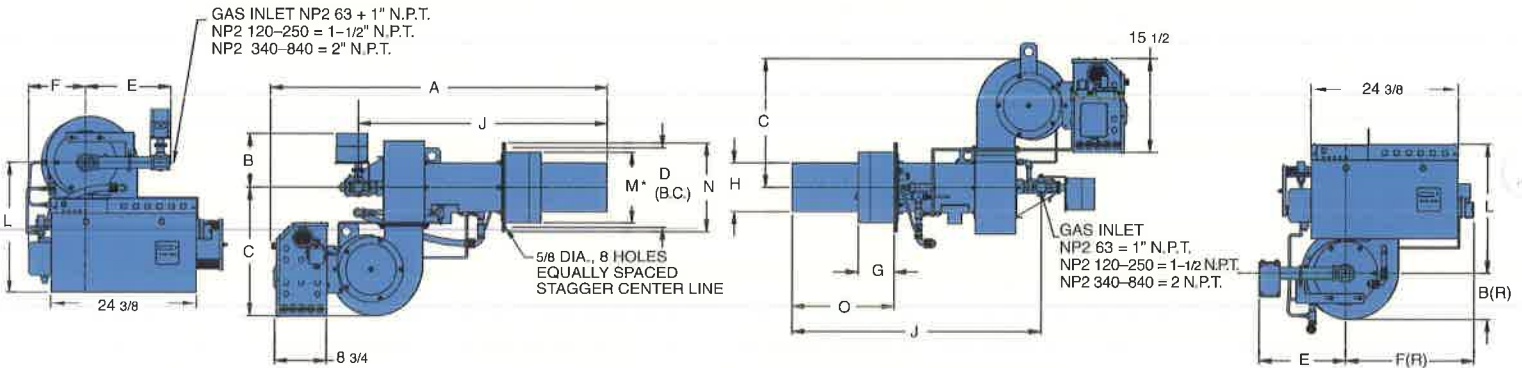
- Metallic fiber combustion head
- Blower assembly with 3450 RPM motor
- Variable frequency drive (optional)
- Combustion control with UV scanner
- Gas electric pilot with ignition transformer
- Main and pilot gas trains
- Linkageless controls
- Washable stainless steel filter assembly



Nova Plus 2 is furnished with the exclusive Alpha System LED display. Modulating control is achieved through the use of linkageless controls mounted in the control panel.

MODEL NP2

MODEL NP2R



* ADD 3/8" TO "M" FOR OPENING IN HEAT EXCHANGER FRONT PLATE

DIMENSIONS (Inches) Standard Models

RATINGS & SPECIFICATIONS

Burner Model	A	B	B(R)	C	D(B.C.)	E	F	F(R)	G	H	J	L	M	N	O	CAPACITY ¹							
																BLOWER MOTOR H.P. MAX.	STD. GAS TRAIN SIZE	NAT. GAS MBH MAX.	NOMINAL BOILER BHP	GAS PRESS (IN. W.C.) ² MIN.	NAT. GAS MBH MAX.	NOMINAL BOILER BHP	GAS PRESS (IN. W.C.) ² MIN.
NP2-G-63	48 3/8	10 7/8	6 1/2	16 5/8	11 1/8	13 7/8	11	19 7/8	4	5 3/4	33 1/4	19 1/2	9 5/8	12 5/8	10 1/4	1 1/2	1"	700	16.7	7.7	750	17.9	8.3
NP2-G-120	53 3/8	10 7/8	6 1/2	16 5/8	11 1/8	13 7/8	11	19 7/8	4	5 3/4	38 1/4	19 1/2	9 5/8	12 5/8	15 1/4	3/4	1 1/2"	1,230	29.3	8.4	1,360	32.4	9.7
NP2-G-170	56 3/8	10 7/8	7 3/4	21 1/4	13 1/8	14 1/4	9 1/2	21 1/4	6	8 1/8	41 1/4	21 1/2	11 5/8	14 5/8	17 1/4	1.0	1 1/2"	1,740	41.4	11.4	1,900	45.2	12.7
NP2-G-250	62 3/8	10 7/8	7 3/4	21 1/4	13 1/8	14 3/8	9 1/2	21 1/4	6	8 1/8	47 5/8	21 1/2	11 5/8	14 5/8	23 1/4	2.0	1 1/2"	1,998	47.5	12.5	2,770	66.0	13.7
NP2-G-340	66 3/8	10 7/8	7 3/4	21 1/4	13 1/8	14 3/8	9 1/2	21 1/4	6	8 1/8	51 5/8	21 1/2	11 5/8	14 5/8	27 1/4	2.0	2"	3,200	76.2	13.1	3,470	82.6	14.1
NP2-G-420	67	10 7/8	7 3/4	21 1/4	15 1/8	14 3/8	9 3/4	21	6	9 7/8	53 7/8	21 1/2	13 5/8	16 5/8	28 1/4	3.0	2"	4,375	104.2	14.4	5,020	119.5	15.8
NP2-G-520	74 7/8	11 1/2	7 3/4	23 3/4	15 1/8	14 1/2	9 3/4	21	6	9 7/8	59	24 1/8	13 5/8	16 5/8	33 1/4	5.0	2"	4,998	119.0	20.0	6,100	145.2	21.4
NP2-G-630	86	11 1/2	11 1/8	29	21 1/2	14 1/4	11 3/4	40 1/8	8 1/2	12	60 3/8	29 7/8	20	23	33 7/8	7.5	2"	6,300	150.0	16.0	7,350	175.0	18.0
NP2-G-840	94	11 1/2	11 1/8	29	21 1/2	14 1/4	11 3/4	40 1/8	8 1/2	12	68 3/8	29 7/8	20	23	41 7/8	10.0	2"	8,400	200.0	32.0	8,600	209.7	32.5



Power Flame Incorporated

2001 South 21st Street Phone 620-421-0480
Parsons, KS 67357 Fax 620-421-0948
Web Site: <http://www.powerflame.com>
E-Mail: csd@powerflame.com

- Note 1. Capacities listed are based on +1.0" W.C. positive pressure. Refer to capacity curves for derates based upon combustion chamber pressure.
2. At inlet to main manual shutoff cock to obtain P/F certified ratings with standard U.L. gas train. Optional gas trains available for lower pressures.
3. Maximum Gas Pressure 56 in w.c.

Consult Factory for dimension verification prior to construction