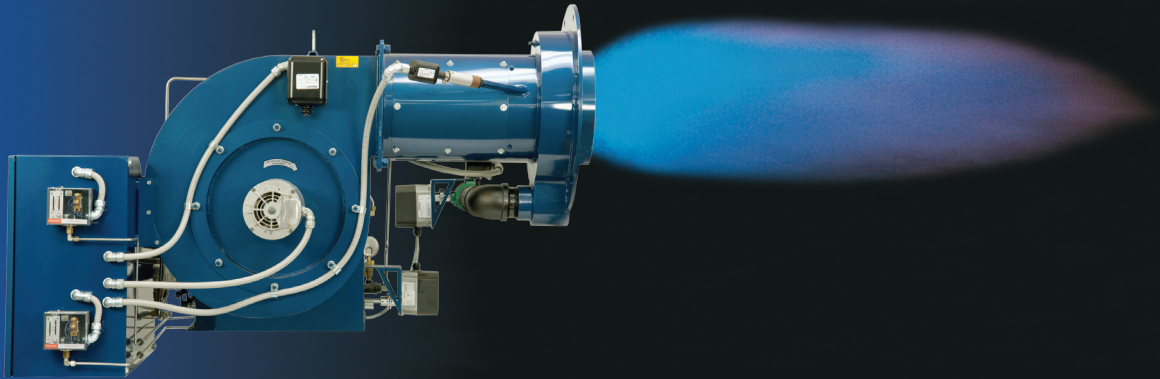


CMAX	GAS	12,500,000–
ULTRA CMAX	or	120,000,000
NOVA PLUS	OIL	BTU
CSB		
VECTOR		

Power Flame® Water Tube Boiler Packages



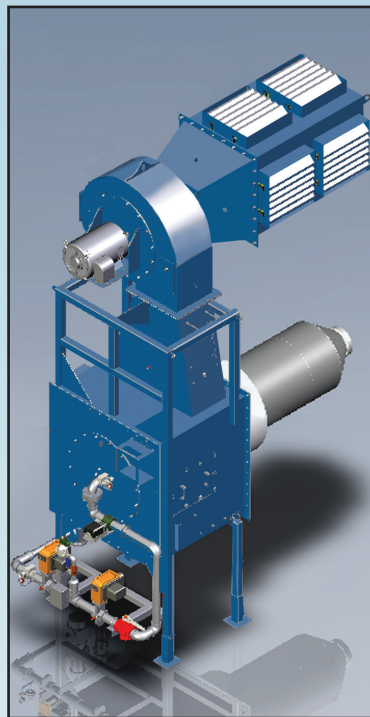
Power Flame's Proven Solutions for Gas/Oil Fired Water Tube Boilers

Power Flame has several proven solutions available for gaseous or liquid fired water tube packaged boilers. In an industry previously dominated by windbox/register type burners, Power Flame offers two distinct solutions: windbox style burners in the Vector and ultra low NOx CSB models; or gun style burners in the Cmax, Ultra Cmax and Nova Plus models.

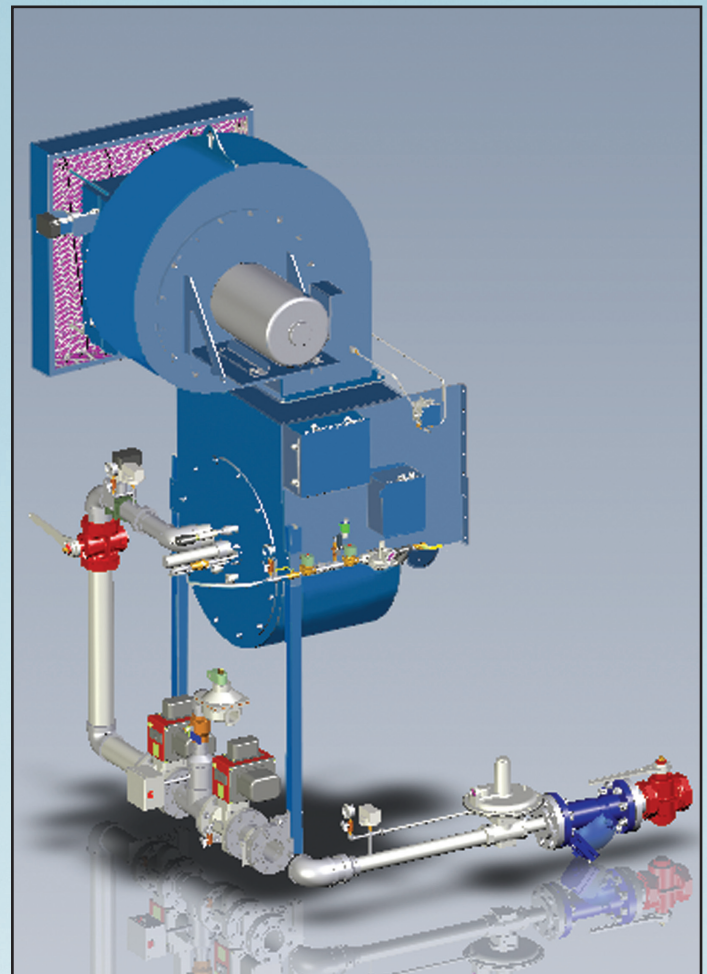
Our range of burners offer maximum efficiency, stable combustion, low and ultra low NOx emissions. PLC or microprocessor-based state-of-the-art controls are available along with industrial grade fuel components and accessories.

Our modular concept common on all Power Flame burners produces added flexibility for a wide range of optional

features and code requirements. When possible, our packaged combustion systems are factory fire-tested to ensure cost effective installation and start-up.



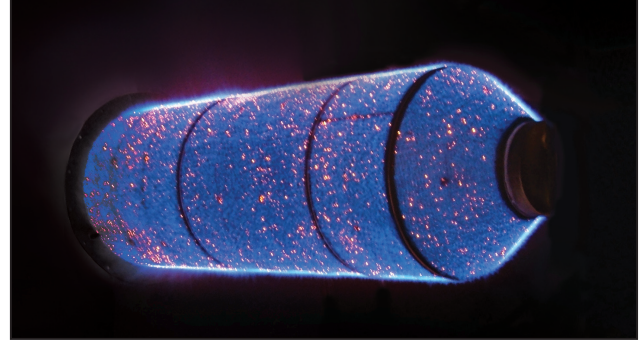
Windbox style ultra low NOx CSB burner.



Windbox style Vector gas/oil burner

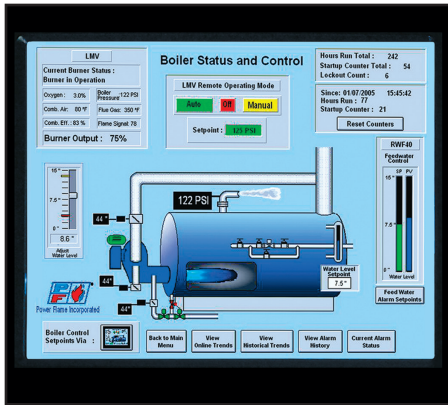
Power Flame

The Power to Manage Energy



Nova Plus and CSB Burners Powered by **ALZETA CORPORATION** CSB Technology

CONTROL OPTIONS



State of the art Director SCS Touch Screen Controls are available on all models.



Multiple Boiler Free Standing Control Panels with Touch Screen Displays



A-B PLC based burner management and combustion controls

CAPACITIES / BURNER SELECTIONS / NOX EMISSIONS

BOILER SIZE	CMAX		VECTOR		NVC		CSB		UCM (3)	
	GAS	OIL (1)	GAS	OIL (1)	GAS	OIL(1,2)	GAS	OIL(1,2)	GAS	OIL (1)
	< 20PPM	< 40PPM	< 20PPM	< 40PPM	< 9 PPM	< 40PPM	< 9 PPM	< 40PPM	< 9 PPM	< 40PPM
10,000 PPH	X	X	X	X	X	X	X	X	X	X
20,000 PPH	X	X	X	X	X	X	X	X	X	X
30,000 PPH	X	X	X	X	X	X	X	X	X	X
40,000 PPH	X	X	X	X	X	X	X	X		
50,000 PPH	X	X	X	X	X	X	X	X		
60,000 PPH	X	X					X	X		
70,000 PPH	X	X					X	X		
80,000 PPH	X	X					X	X		
90,000 PPH							X	X		
100,000 PPH							X	X		



Power Flame Incorporated

2001 South 21st Street Phone 620-421-0480
 Parsons, KS 67357 Fax 620-421-0948
 Web Site: <http://www.powerflame.com>
 E-Mail: csd@powerflame.com

1. Oil NOx Emission based on Amber Oil and use of FGR
2. Emergency Back-up Only
3. Emissions based on membrane wall furnace